





2026 PARENT HANDBOOK


 Government of South Australia
Department for Education

Be Present, Be Kind, Be Your Best

 (08) 8382 0955

 hackwestschool.sa.edu.au

 dl.1131.info@schools.sa.edu.au

 50 Glynville Drive, Hackham West 5163



Wangka Hackham Piipawardli

CONTENTS

Welcome Information and Current Programs	Page 4
Term Dates and Public Holidays	Page 4
School Staff	Page 5
School Times	Page 6
Curriculum Information	Page 7
Social and Emotional Learning	Page 8
Attendance	Page 9
School Bus Service	Page 10
Outside School Hours Care	Page 10
School Uniforms	Page 11
Canteen	Page 12
Allergies	Page 12
Communications	Page 13
Supporting Positive Behaviour	Page 14
Anti-Bullying	Page 14
Student Details	Page 15
Further Information	Page 16

WELCOME INFORMATION 2026

Welcome to Hackham West School, Niina Marni Wangka Hackham Piipawardli! We are delighted to welcome your family to our school community. At Hackham West, we pride ourselves on fostering a strong connection with our families and are committed to providing every student with the support they need to succeed in their learning journey.

At Hackham West School, we stand out and can boast; supportive classrooms, strong ties to local Aboriginal culture, ongoing connection to local community services and soon to be upgraded outdoor learning spaces, designed for engagement with nature and enhanced outside classroom experiences. We foster a nurturing learning environment with unique classroom structures that allow all students to thrive. Hackham West welcomes every student and family to visit our vibrant community and explore what we offer. If you would like to learn more please book a time to come visit us and see what we're all about.

Our current programs include;

- Heggerty
- Wellbeing Care Group
- InitialLit
- Kimochi's
- Aquatics
- Swimming
- Drum Beat
- Zones of Regulation
- Whats the Buzz
- Cooking
- Bloom Buddies
- Berry Street Learning

These programs are implemented and differentiated across the school to ensure all student learning is targeted to their individual developmental needs.

We welcome parent involvement through Governing Council opportunities, regular and event volunteering, and termly invitations to school events and open days. We encourage students to share their learning at home and love to share student success and joy in various forms of media and communication.

Hackham West offers a welcoming warmth and genuine acceptance that you feel the moment you step through the door.

2026 TERM DATES

TERM 1

January 25th to April 11th

TERM 2

April 30th to July 4th

TERM 3

July 24th to September 20th

TERM 4

12th of October - 13th of December

PUBLIC HOLIDAYS

AUSTRALIA DAY P/H

Monday the 27th of January

ADELAIDE CUP

Monday the 10th of March

EASTER LONG WEEKEND

Fri the 18th to Mon the 21st of April

ANZAC DAY

Friday the 25th of April

KINGS BIRTHDAY

Monday the 9th of June

LABOUR DAY

Monday the 6th of October

CHRISTMAS LONG WEEKEND

Wed the 24th to Fri 26th of December

NEW YEARS EVE

Wednesday the 31st of December



HACKHAM WEST SCHOOL STAFF

LEADERSHIP TEAM



Shannon Little
Principal



Julie Dunn
Deputy Principal



Bek Willoughby
Special Ed Leader

ADMIN



Britney Duffus
Admin/Finance



Claire McLeary
Administration

SPECIALISTS



Vikki Chave
Speech Pathologist

TEACHING TEAM



Brad Shannon Little
PE/Science



Chloe Camporeale
Class Yarapurla



Emilie Grose
Class Mila



Jenn Kniepp
Class Marnkutyi



Jennifer Wallace
Class Marru



Jess Masters
Wellbeing & Digital Tech



Miffy Mosley
Class Kuma



Shana Karklin
Class Purlaityi

CLASSROOM HEROES



Ashlee Newton



Gypsy Hefferan



Kellie Petersen



Kim Edwards



Lyndall Skogdad



Ruth Battye

SITE CHAMPIONS



Danielle Gottfried-Wilson
Canteen Manager



Johnny Schirripa
Groundsman



Mark Courage
Library, IT & Lawn Lover



SCHOOL TIMES

The front office is open from 8:00am to 4:00pm each school day. The phones operate during office hours only. School holiday hours are TBC separately for each break, the answering machine will be functioning and checked multiple times each holidays.

OFFICE HOURS

8:45am Children are expected to arrive at school

8:55am School Day Begins

9:00am Morning Care Group 

10:50am Recess Play

12:50pm Lunch Play

1:10pm Lunch Eating time

3:00pm School Day Finishes 

SCHOOL TIMES

School gates are open from 8:30am - 9:15am.

Afternoon school pickup, gates are open from 2:45pm - 3:15pm. Gates are locked at all other times of the school day. The only entrance to school grounds during school hours is through the front gates and office.

SCHOOL GATES

All children are to be collected and 'signed-out' from the front office during school hours. The attending adult must be listed on the student's file to pick them up. We will not let your child leave school grounds with an adult that is not filled in as an emergency contact UNLESS we have verbal contact from you and the person picking up the student can show government approved Identification.

EARLY DEPARTURE

If your child arrives late, please make sure they are dropped by the front office to sign in. A reason for the late arrival must be given by an adult to update the absence from an unexplained to the appropriate code.

LATE ARRIVAL

Breakfast Club starts from 8:30am and runs until 8.55am. Our School Breakfast Club aims to ensure all students start the day with a healthy meal in a warm and welcoming environment that assists with social connections. Parents are welcome to join their children while they eat. This time is a great opportunity for parents to read to their children, with books always accessible in the culture room. Breakfast is provided to students to help improve focus and participation in their education. Breakfast Club is accessible by all students.

BREAKFAST CLUB

CHILDREN ARE NOT ALLOWED TO BE ON SCHOOL GROUNDS UNSUPERVISED OUTSIDE SCHOOL HOURS



ATTENDANCE

IF A STUDENT IS ABSENT

Parents/Caregivers must notify the school by phone, in person, or message when a student is absent, late or leaving early. If arriving late, enter through the front office with your child to inform admin staff of the reason, if leaving early you must collect your child from the front office.

When planning for your child to be away for an extended period you must apply for an exemption through the front office, these include for medical absences and family holidays.

Each day your child has an unexplained absence you will receive an SMS asking for an explanation, you are able to reply to these messages anytime for updating attendance.

HACKHAM WEST SCHOOL SMS LINE: 0428 610 245

FREQUENTLY ASKED QUESTIONS

Should I notify the school if my child refuses to go to school?

Yes, you should notify the class teacher or a leadership member as soon as possible to enable support for your child.

Should I notify the school if my child is unwell?

Yes, you should notify the school if your child is unwell.

How can I help my child be a regular attendee at school?

- Teaching your child that school is fun and learning is fun
- Visit the school and your child's class to get to know their teacher
- Ensure your child has had a good night sleep
- Have a morning routine which your child understands
- Find time each day to discuss what your child has been doing at school
- Ensure your child has a uniform ready to wear to school
- Make sure your child has had breakfast or attends the Breakfast Program

SCHOOL BUS SERVICE

The school provides a morning bus service to assist families facing challenges in getting their children to school. The bus operates solely in Hackham West and its nearby suburbs. Students should be prepared for pickup by 8:00 AM. Please be aware that there are limited spots available for this service, and access to support is determined by the specific needs of each family. If you believe this service could be beneficial for you and would like assistance, please schedule a time to discuss this with Shannon.

BIKES AND SCOOTERS

Children are welcome to ride their scooters and bikes to school. We have a bike shed located by the internal gym entrance. There is both bike and scooter racks for storing your equipment during the day. Please remind your children if they choose to ride they must walk their bikes through the school to the shed.



OSHC

OUTSIDE SCHOOL HOURS CARE

Work commitments and school hours rarely align – that's where OSHC comes in! YMCA OSHC provides a safe, fun, and stimulating place for children before / after school hours as well as Vacation Care during school holidays from the school's Yellow Unit.

Hackham West OSHC understands the importance of play and learning experiences that are both planned, using children's voice, and spontaneous, to meet the best possible outcomes.

Bookings can be completed online, on the App or over the phone. In addition to utilising the latest technology to manage bookings, our friendly OSHC Support Team is available over the phone Monday through Friday, 9am-5pm.

OPEN HOURS

Before School Care: 6:45am – 8:30am

After School Care: 3:00pm – 6:00pm

Vacation Care & Pupil Free: 6:45am – 6:00pm

Early School Finish: 2:00pm – 6:00pm

OSHC FEES

Full Fee	Average Subsidised Fee	
\$24.00	\$3.45 - 12.65	Before School
\$31.30	\$4.65 - \$17.05	After School
\$69.90	\$10.05 - \$36.85	Vacation Care / Pupil Free Days
\$90.80	\$13.05 - \$47.85	Vacation Care / Pupil Free Days with Excursion or Incursion
\$3.00		Casual Booking Fee
\$15.00		Once off - Hat Fee

Once a child is enrolled, families and carers can contact Family Assistance with the service's provider number to determine their eligibility for the Child Care Subsidy. This is used to determine a families discounted fee, usually between 50-85%. As a guide 95% of OSHC families receive 50% or more subsidy off the standard rate.

OSHC CONTACTS



Bookings & Administration

Phone: 08 8200 2516

Email: oshc@ymcasa.org.au

Website: www.sa.ymca.org.au/what-we-do/oshc/hackham-west-primary-school

Centre Details

Director: Kylie Schirripa

Phone: 0428 865 616

Email: hackhamwest.oshc@ymcasa.org.au



CANTEEN

Our canteen is open Monday to Friday for lunches and over the counter sales. All lunch orders are to be placed at the canteen by 10am each day. The canteen is a Healthy Options canteen and complies with the healthy eating guidelines for schools.

The canteen offers Friday specials of food not regularly available on the menu. These are also homemade and healthy meal choices. Friday specials are advertised in the newsletter and at the canteen each week.

Weekly 'Meal Deals' are available at the canteen that include a weekly water bottle, lunch, recess and a piece of fruit every school day for only \$40 a week!

Students who are utilising the meal deal have the option to order the Friday special at no additional cost.

Weekly payments have to be made on Mondays or in advance by either:

- cash or EFT
- cash to Danielle at the canteen
- reoccurring Centrepay payments set up in advance

The purpose of the 'Meal Deal' is to reduce cost and stress of food for our families and to encourage daily attendance for our students, however if a student is absent no credit/refund will be issued for the missed day.

MENU ITEMS

Snack Options	Lunch Options
Grainwaves	Meat and Salad Roll (Chicken, ham or tuna)
Yoghurt (strawberry, blueberry or vanilla)	Meat and Salad Wrap (Chicken, ham or tuna)
Cheese and Crackers	Meat and Salad Sandwich (Chicken, ham or tuna)
Vegies Straws	Toasted Sandwiches
Biscuits	Baked Potatoes
Milo Balls	Beef Burgers
Cupcakes	Chicken Burgers
Popcorn	Salad

ALLERGIES

Insure any allergies your child suffers from have completed health plans so alerts can be provided to the canteen.

Our school is a 'nut aware' site as we have people on site with known, documented allergy to nuts (anaphylaxis). Our families are asked not to send food to school that contains nuts. This includes peanut butter and Nutella.



UNIFORM

Our school uniform features the colours black and gold. We offer a smart polo shirt, polar fleece jacket, hoodie, beanie, and bucket hat, all of which are available for purchase at the front office throughout the year. These items can be purchased using either cash or EFTPOS for your convenience. We ask that students wear plain black pants, shorts, or skirts as part of the uniform, and that sensible footwear is worn at all times to ensure safety and comfort. During Terms 1 and 4, hats are required for all outdoor play to protect students from the sun.

PLEASE BE ASSURED THAT NO CHILD WILL EVER BE DENIED SCHOOLING FOR NOT WEARING UNIFORM



\$45.00



\$30.00



\$20.00



\$38.00



\$8.00

ENROLMENT UNIFORM

When a child starts at our school, we are pleased to gift them a complimentary enrolment polo shirt and bucket hat. This gesture helps each child feel a sense of belonging and pride from their very first day, making their transition into our school community smoother. Providing a uniform not only supports families by reducing initial expenses but also ensures that every student can wear our school colours with confidence. It encourages unity and inclusion among all students, setting a positive tone for their educational journey. By starting with the same uniform, we reinforce the message that every child is a valued and equal part of our school.

LOST PROPERTY

Lost property is a common occurrence at school, and we encourage parents and caregivers to clearly label all of their children's belongings, including uniforms, lunch boxes, hats, and school bags, with their child's name. Clearly labelled items are much easier to return to their owners, helping minimise the inconvenience of lost items and reducing replacement costs for families. Unclaimed items are placed in our lost property box, the ottoman in the school reception, we strongly recommend checking here if your child is missing any personal belongings. By ensuring all items are clearly marked, we can work together to keep lost property to a minimum and ensure a smooth school experience for everyone.



HOUSE TEAMS

At our school, we implement a house team system to cultivate a sense of community and friendly competition among students. In this system, students are divided into groups known as "houses," each distinguished by a unique name, colour and mascot. Throughout the school year, these house teams engage in various academic, athletic, and artistic challenges, earning points for their respective houses. This approach not only encourages teamwork, school spirit, and camaraderie but also helps students develop leadership skills and a sense of belonging. By engaging in house activities, students gain valuable experiences that enhance their learning environment and contribute to a more cohesive school community.



Kadli, pronounced 'Gahd-lee' means dingo in Kurna and are the red team.



Wartu, pronounced 'Wah-too' means wombat in Kurna and are the green team.



Kuula, pronounced 'Koo-lah' means koala in Kurna and are the blue team.



Naalha, pronounced 'Nah-lah' means echidna in Kurna and are the yellow team.

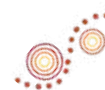
STUDENT LEADERSHIP

YOUNG LEADERS

Our Young Leaders are the heads of each house team in our school and make up our Student Council. Becoming a Young Leader offers students the opportunity to develop leadership skills and make a meaningful contribution to their school community. By participating students build confidence, learn to take on responsibility, improve their communication skills and gain a sense of belonging, while also learning valuable life skills such as problem-solving, decision-making, and goal-setting. Through their involvement, students have the chance to share their ideas, represent their peers, and influence positive changes within the school. Overall our Young Leaders will develop the skills to be future leaders and have the opportunity to support a positive and inclusive school culture.

LUNCH WITH A LEADER

The Lunch with a Leader program is a special initiative where students are invited to share a lunch eating time with Mrs Dunn. This program provides an opportunity for students to build positive relationships with leadership, celebrate their achievements, and discuss their experiences at school in an informal and supportive setting. It is also a chance for leadership to listen to students' ideas and feedback, helping to create a welcoming and inclusive school environment. We see this program as a valuable way to recognise students' efforts, promote open communication, and strengthen connections within our school community.



COMMUNICATION

Community is a valued trait of Hackham West School and to continue with this into the future we endeavour to have very open and supportive lines of communication with our families. We aim for information to be as accessible as possible with the use of phone, SMS, secure apps and social media all playing a part.

SCHOOL PHONE NUMBERS

OFFICE PHONE: (08) 8382 0955

ATTENDANCE MSG LINE: 0428 610 245

SCHOOL BUS PHONE: 0438 866 593

On occasion the school may communicate with our families via personalised SMS text messages sent directly to your mobile phone. We have found this to be the best solution for the communication of student attendances.

NEWSLETTERS

Hackham West distributes newsletters three times a term, highlighting upcoming events, canteen specials, and student learning. These newsletters serve as a fantastic resource for families to stay updated on school activities and to celebrate our students' accomplishments. We aim to make them both engaging and informative, providing a snapshot of the lively atmosphere at Hackham West School. Alongside the printed copies, electronic versions are also available, ensuring that all families can access important updates and stories.

SEESAW APP

Seesaw is an app utilised by schools all over the world, it provides an easy use form of communication between schools and families. Seesaw is Hackham Wests preferred method of communication and there is an expectation that parents will regularly monitor Seesaw for any updates.

The app allows for direct communication with your child's teacher and gives teachers the ability to share student work with families. At the beginning of the year your child will bring home a QR Code to link your profile with their class. Once this notification is received and you would like support with set up please contact the school.

SOCIAL MEDIA ACCOUNTS

Please check out our Hackham West School social pages. The school has a Facebook page and an Instagram page. We use them to provide families with information about events, activities and positive achievements within our school, as well as promoting a sense of community.

The page doesn't replace regular communication modes such as notes home, text messaging, and the newsletter; instead, it communicates through social media many of the enjoyable, exciting, fun and terrific learning of our students!



GETTING INVOLVED

Volunteers bring energy, skills, and care that help our community thrive. They support learning, create safe and welcoming events, and give students extra time and attention. Their kindness builds strong connections between families, staff, and students, and shows young people the power of giving back. Every hour shared makes our programs richer, our school more inclusive, and our goals possible.



GOVERNING COUNCIL

Parents are invited to become members of our Governing Council. Meetings are held at 2.30pm on Mondays of weeks 4 and 8 each term, younger children are welcome to come and play during the session. The Governing Council is an excellent opportunity for parents to participate in providing resolutions for issues affecting the school, contribute to the direction for children's education and help develop relationships with the broader community in collaboration with the whole school.

CANTEEN ASSISTANCE

Volunteering in the canteen is a great opportunity to connect with other parents, gain insights into the school environment, and contribute positively to the children's day-to-day experience. It also allows carers to develop new skills, such as food preparation and customer service, which can be both personally rewarding and professionally beneficial. To discuss volunteering your time please see Danielle in the canteen.

SUPPORTING EVENTS

Volunteers are essential for our event days to assist in cooking BBQs and serving families, ensuring a successful and enjoyable event for everyone involved. Your help would greatly contribute to fostering a sense of community and togetherness.

EXCURSIONS AND CAMPS

At our school, parent volunteers are not permitted to accompany children on excursions and camps. This decision aims to create safe opportunities for students to practice listening, problem-solving, and teamwork with trusted adults outside their family circle. Additionally, we focus on fostering resilience, curiosity, confidence, and independence, while enhancing stronger communication and coping skills among our students. Ultimately, this approach helps children feel more at ease as they engage with the broader community as they grow.

VOLUNTEER REQUIREMENTS

To volunteer in a school space, it's important to understand the requirements and expectations involved. Volunteers should be able to show an understanding of and respect for the diverse cultural backgrounds of students, maintain open communication and engage with children positively, while being patient with their varying developmental stages. Volunteers will need to provide a RRHAN-EC fundamentals course certificate and a Working With Children's clearance. If you would like assistance in obtaining these please see Britney in the office.

<https://www.education.sa.gov.au/working-us/rrhan-ec/fundamentals-course-responding-risks-harm-abuse-and-neglect-education-and-care>

<https://www.dcsiscreening.sa.gov.au/SCRequestApplicationIndividual>



STUDENT INFORMATION

Parents and caregivers are required to provide the school with copies of any legal documentation related to custody, guardianship, restraining orders, and similar matters. It is crucial that parents and caregivers inform the leadership team, and class teacher about any implications for both the student and the school.

Keeping emergency contacts up to date is also essential. Ensure that details such as addresses, phone numbers, and contacts are current and accurate, as regularly updating this information will help the school respond effectively in any situation.

Detail Update forms are available at the front office.

ACADEMIC REPORTING

Academic reports provide families with a clear overview of their child's progress, strengths, and areas for improvement. They support communication between home and school, helping families understand their child's achievements and how best to support their learning and development both now and in the future.

SCHEDULE

Term 1: Parent, Student, and Teacher Learning Conferences

Term 2: Written Report

Term 3: Parent, Student, and Teacher Learning Conferences

Term 4: Written Report

FEES AND PAYMENTS

School fees, often referred to as materials and services charges, help cover the costs of resources and learning materials provided to students. Our school's Governing Council has consistently chosen to approve only the minimum required charge set by the Department for Education, aiming to keep education affordable for all families. We can also support applications for the School Card scheme, which provides financial assistance for eligible families to help cover school fees.

Our school is passionate about creating experiences and opportunities for our students, we take care to make sure these experiences are as low cost as possible. Payment for excursions, uniform etc can be made to the school via EFTPOS, cash or bank transfer. The school details for payment are:

Name: Hackham West School

BSB: 105 136

Account No: 510 279 040



FIRST AID

For minor accidents such as cuts, grazes, bites, etc., children receive on the spot treatment, carried out in the front office by trained first aid staff. A record is kept in the school of all injury and illness treated in the front office. Teachers on duty carry first aid supplies to deal with minor playground injuries.

When a serious injury occurs, parents/caregivers or emergency contacts are immediately notified. If no connection can be made, an ambulance will be called. Please ensure all contact details are kept up to date in case of an emergency.

LOCATION

Our designated first aid space is located in the front office and is managed by admin and leadership staff. During any whole school events the first aid station is relocated to the school gym for easier access to all.

AED

In South Australia, having a defibrillator on school premises is now an important and mandatory safety measure that can help save lives during cardiac emergencies. Hackham West have installed their Automated External Defibrillator (AED) in the front office and have registered it with SA Ambulance Service. This device is accessible by the community but during school office hours only.

MEDICATIONS

Schools require clear instructions in the form of a department medical agreement plan to administer medication, under most circumstances this needs to be completed by both a medical practitioner and the child's guardian. Families are responsible for providing medication in its original packaging, clearly labelled with the child's name and dosage instructions. Schools will not administer the first dose of any new medication and require updated instructions if the medical needs or dosage change. If your child will be required to take medication at school

MEDICATION FORMS

<https://www.education.sa.gov.au/docs/support-and-inclusion/disability-advice-and-research/hsp151-medication-agreement.doc>

<https://www.education.sa.gov.au/docs/support-and-inclusion/disability-advice-and-research/hsp152-multiple-medication-agreement.doc>

HEALTH PLANS

Families are encouraged to collaborate closely with the school to develop individual healthcare plans to support students' needs and ensure proper medical care during school hours, thereby promoting student safety, inclusion, and wellbeing across all school settings. If your child has health requirements beyond general first aid practices a Health Care Plan needs to be completed by your doctor and provided to the school. This includes if your child has asthma or any allergies.

CARE PLANS

A full list of department care plans can be found here:

<https://www.education.sa.gov.au/schools-and-educators/health-safety-and-wellbeing/specific-health-conditions-and-needs>



CURRICULUM INFORMATION

We are committed to providing a quality teaching and learning environment and continuous improvement culture with our programs and practices. We have high expectations for all our students at Hackham West School. The Australian National Curriculum forms the basis of our curriculum with a strong commitment to Literacy and Numeracy.

INITIAL-LIT

Initial-Lit instruction is an evidence-based whole-class literacy program providing all children with the essential core knowledge and strong foundations to become successful readers and writers. InitialLit is a three-year program, covering the first three years of school

SPECIAL EDUCATION SUPPORT

We have a dedicated Special Education Co-ordinator who works with teachers, parents and students to ensure students with disabilities are accessing all levels of support needed at school and home. This role also provides 1:1 and small group support during the day to ensure student learning is progressing.

ON-SITE SPEECH PATHOLOGIST

We have a two day per week on-site Speech Pathologist to work with teachers and observe students to offer the best possible practice for learners with speech and language difficulties.

EXPLICIT DIRECT INSTRUCTION - EDI

Explicit direct instructions is an approach to learning based on the best research available, it helps teachers deliver effective lessons that can significantly improve achievement for all learners, including Aboriginal learners, children with trauma and students with special needs. This pedagogy is used in all classrooms.

DIGITAL TECH

Our three older classes take part in regular digital tech lessons where they learn safe, smart and creative ways to use devices. These skills build confidence, support problem-solving, and help them work together on real-world projects.

HEALTH & PE

The PE program focuses on teamwork, resilience, and personal growth, encouraging students to set and achieve fitness goals. Lessons cater to various skill levels, fostering inclusion. Participating in these lessons can also assist children in finding passion and connect to outside of school sports.

SCIENCE

Science is a hands-on learning experience for all students, fostering curiosity and encouraging critical thinking skills. Through engaging experiments and interactive lessons, students explore fundamental scientific concepts, develop problem-solving abilities, and gain a deeper appreciation for the world around them. This approach not only enhances their understanding of science but also inspires a lifelong passion for learning and discovery.

WELLBEING LESSONS

Supporting wellbeing not only helps children and young people to feel happier and less anxious, it will also help them to have positive interactions with their peers, families and to learn more effectively. Wellbeing has a significant impact on students' academic outcomes, students with a greater level of wellbeing are more likely to experience improved academic outcomes, this is why our 3 younger classes have scheduled lessons each week for wellbeing education.

LOTE STUDIES

At HWS, we integrate the Kurna language into our daily routine as a school-wide strategy to enhance our understanding of the traditional language of Kurna land.



SOCIAL & EMOTIONAL LEARNING

NURTURE CLASSROOMS

The concept of nurture highlights the importance of social environments - who you're with and its significant influence on behaviour and cognitive ability. Nurture classrooms offer explicit educational experiences children need to give them the skills to do well at school, make friends and deal more confidently and calmly with the trials and tribulations of life, for life. This philosophy is embedded in all classrooms at Hackham West.

CIRCLE TIME

Circle Time is a structured group activity developed as part of the Berry Street Education Model (BSEM). BSEM is an educational approach focusing on trauma-informed, strengths-based teaching strategies to support student wellbeing and learning. Circle Time within the model is a regular, purposeful gathering where students and teachers sit in a circle to promote connection, inclusion, and emotional safety. Circle activities can include check-ins, sharing personal successes or challenges, acknowledgements of gratitude, compliments, and collaborative discussions about classroom issues or goals.

DRUM BEAT

The concept of nurture highlights the importance of social environments - who you're with and its significant influence on behaviour and cognitive ability. Nurture classrooms offer explicit educational experiences children need to give them the skills to do well at school, make friends and deal more confidently and calmly with the trials and tribulations of life, for life. This philosophy is embedded in all classrooms at Hackham West.

KIMOCHI'S

Japanese for "feelings", Kimochis are a vital part of our social-emotional learning program. They are a range of seven charming, tactile, interactive plush toys, each representing a different personality. One of the increasing challenges in society at present is to assist children in expressing their emotions constructively. When children can communicate their feelings, they cultivate confidence, kindness, self-awareness, self-control, resilience and most importantly, gratitude.

ZONES OF REGULATION

Zones of Regulation is a framework and curriculum that develops awareness of feelings, energy and alertness levels while exploring a variety of tools and strategies for regulation, prosocial skills, self-care, and overall wellness.

COOKING

Cooking can help young kids learn and practice some basic math concepts and build language skills. The experience of creating meals with peers can help build their self-confidence and lay the foundation for healthy eating habits. Cooking classes run in small groups and the children learn a variety of meals and techniques during the course of their cooking lessons.

WHAT'S THE BUZZ?

What's the Buzz? is an evidence-based program used to teach young people social and emotional intelligence. At Hackham West the program is run in small groups once per week for selection of students and whole classes once per week to support all students social and emotional learning.

WELLBEING CARE GROUP

Our Care Group runs at the beginning of each day to provide students with a consistent, supportive space to develop their social and emotional skills. Through explicit Social Emotional Learning (SEL) strategies, students learn how to regulate, connect, and build positive relationships. This daily routine strengthens their readiness to learn and fosters a strong sense of belonging.



SUPPORTING POSITIVE BEHAVIOUR

At Hackham West School we believe in providing a safe learning space for staff and students. We are aware that students come to school with different lived experiences, which lead to varying behaviours throughout their school day. In order to support all of our community, we strive to repair relationships and build deeper, more positive connections.

NURTURE PHILOSOPHY CHANGING BEHAVIOURS

Through our nurture philosophy we actively teach positive behaviour strategies and self-regulation as part of our daily learning and social skills programs at Hackham West. This supports students to value each other and express their concerns about behaviours they see at school. Our approach encourages students to communicate openly and seek help when needed, fostering an environment where empathy and understanding are paramount. By integrating these strategies into everyday activities, we aim to empower students with the tools they need to manage their emotions and interactions constructively.

Ultimately, our goal is to create a school culture where respect, kindness, and inclusivity are the norm, ensuring that every student feels valued and supported. By working together, we can build a foundation for lifelong learning and positive relationships that extend beyond the school gates.

ANTI-BULLYING

Often children confuse someone making a mistake and being mean with an act of bullying. These misconceptions can have a big impact on how your child feels at school. Bullying is an ongoing and deliberate misuse of power in relationships through repeated verbal, physical and/or social behaviour that intends to cause physical, social and/or psychological harm. It can involve an individual or a group misusing their power, or perceived power, over one or more persons who feel unable to stop it from happening.

DEFINITION OF BULLYING

Bullying can happen in person or online, via various digital platforms and devices and it can be obvious (overt) or hidden (covert). Bullying behaviour is repeated, or has the potential to be repeated, over time (for example, through sharing of digital records). Bullying of any form or for any reason can have immediate, medium and long-term effects on those involved, including bystanders.

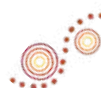
Single incidents and conflict or fights between equals, whether in person or online, are not defined as bullying.

Bullying is dealt with through Restorative Practice, which enables students to take responsibility for their own behaviour and make decisions about what steps need to be taken to solve the problem.

At Hackham West School, bullying in any form is not tolerated. This is not to say that bullying does not occur because research shows that between 10 to 15% of children are harassed per week in any Australian school. When an instance of bullying is reported the following measures may include:

- A Restorative conference between the bully and the victim.
- Meetings between leadership staff, classroom teacher and students involved to explore in-class strategies to prevent future instances of bullying.
- Communication with parents/caregivers of bully and victim explaining what happened and the school's response.
- Removal of the bully from classroom or yard until it is deemed appropriate for them to return.
- Re-think, Suspension or Exclusion based on the severity of bullying at the discretion of leadership staff.

MANAGING BULLYING



STUDENT GRIEVANCES

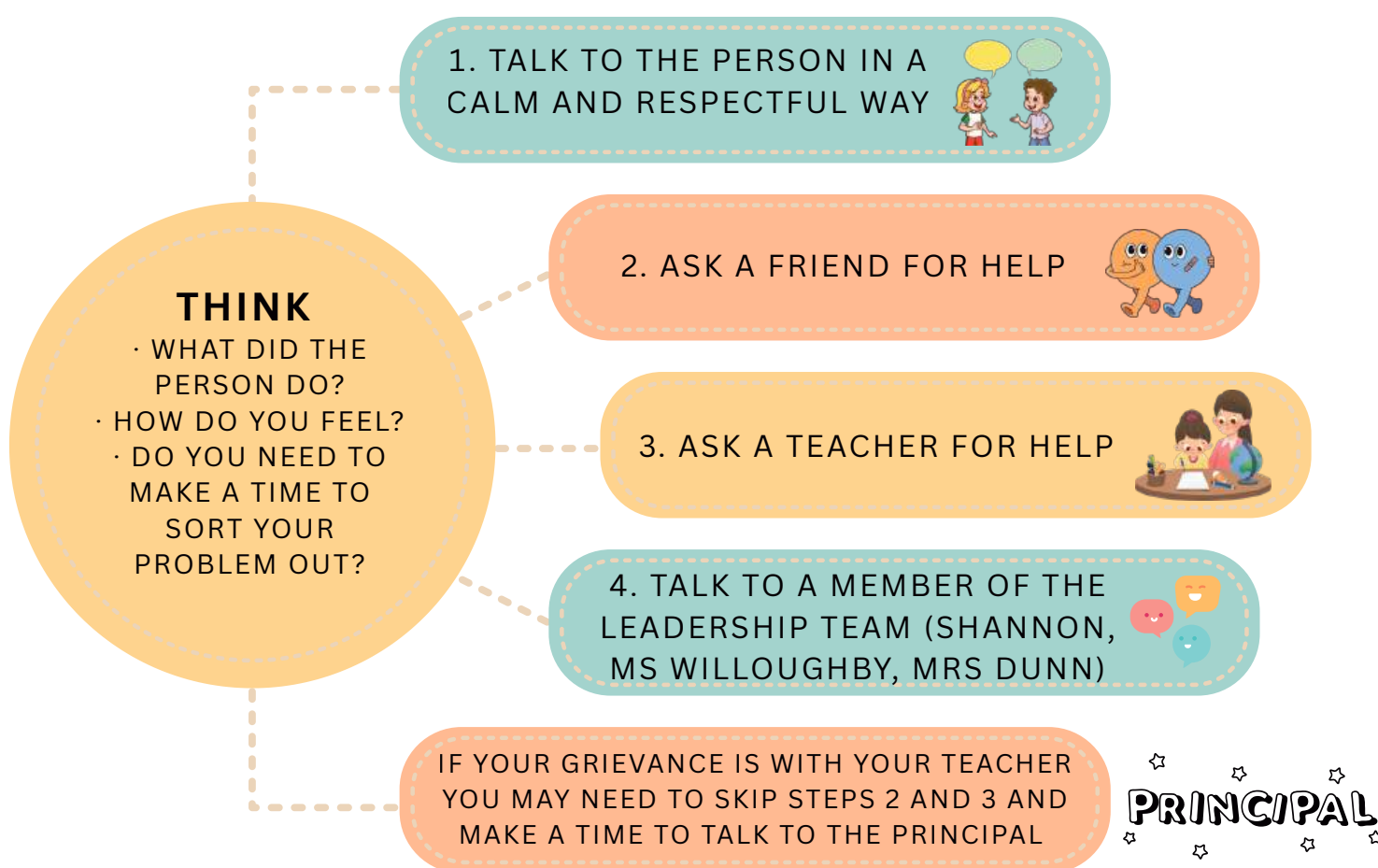
A Grievance is when you have a problem or issue with someone that you need help to solve.

Problem-solving amongst peers is crucial as it fosters collaboration, empathy, and effective communication, skills that are essential for personal and professional growth. When children encounter grievances, it offers a valuable opportunity for them to learn how to navigate conflicts constructively. Parents play a pivotal role in guiding their children through these situations. They can help by encouraging open dialogue, teaching them to listen actively, and modeling respectful ways to express feelings. By providing a supportive environment, parents can empower their children to resolve issues independently, ultimately helping them build confidence and resilience in handling future challenges.

At Hackham West we have built a dedicated, child friendly procedure for children to follow when they are having a grievance within the school. This procedure is on display in classrooms for children and will be referenced by staff when friendship issues are brought to their attention. To support your child when they are voicing a grievance with someone at school you can ask them the think questions from the procedure and talk them through the steps they can take to resolve it.

OUR SCHOOL GOALS

We want our school to be a safe and happy place for everyone.
If there's a problem, we want it to be solved fairly and quickly.



Conflict Resolution can sometimes be difficult.
You may need to talk to someone on your network of trusted adults who can help you.



FURTHER INFORMATION More information can be found on the school's website,
www.hackwestschool.sa.edu.au